



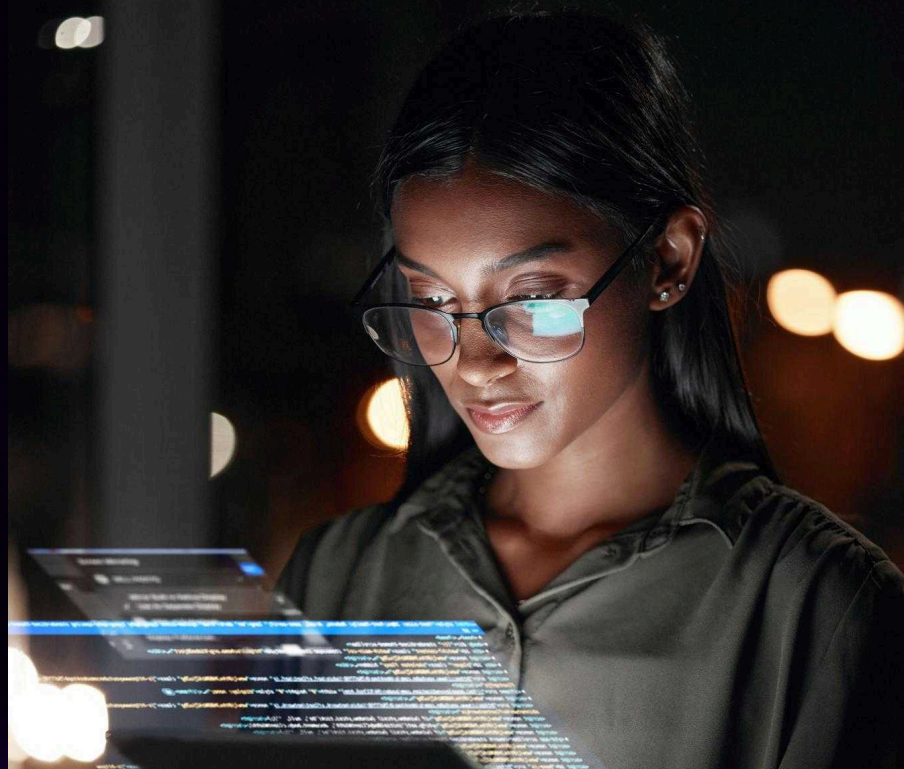
Data Science *Pathway Program*

Master interdisciplinary data science skills to ethically analyze vast data, inform decisions, and drive innovation in a rapidly evolving digital landscape.

🕒 144 Total Clock Hours

📄 2 Obtainable Certifications

🚀 Start Today



What you will learn

This is what you will experience in the Pathway

The pathway includes 2 instructor-led classes for you to learn technical skills and applicable examples to prepare you for technical certifications and training towards Data Science.



Taught by Industry Veterans & World Class Instructors

Potential Career Options

Data Analyst

Business Analyst

Data Architect

Analytics Manager

Data Visualization Specialist

Data Science Consultant

Possible Certifications



Introduction to the Data Science Pathway

Overview

The Data Science Pathway Program is designed to train students to become tomorrow's leaders in this rapidly growing field. The extraordinary spread of computers and online data is forever changing the way decisions are made in many areas, from medicine to marketing to scientific research. Dramatic growth in the scale and complexity of data that can be collected and analyzed is affecting all aspects of work and society, including health care, business practices, public safety, scientific discoveries, and public policy. Understanding effective and ethical ways of using vast amounts of data is a significant challenge to science and to society as a whole. Developing scalable techniques for data analysis and decision-making requires interdisciplinary research in many areas, including machine learning, algorithms, statistics, operations research, databases, complexity analysis, visualization, and privacy and security. Through a unique combination of interdisciplinary coursework and cutting-edge research, the program will enable students to apply techniques and tools of data analysis to applications drawing on appropriate and relevant concepts and models from the engineering, natural, or social sciences.

Upon completion of this program, the graduate will be able to:

Searching and Reporting Analytics

Strategic Evaluation and Recommendations for Solutions

Application of data findings to develop recommendations for business performance

Available Courses

🕒 144 Total Clock Hours

Courses consist of one class from the Foundation Course category and one class from the Intermediate Course category.

Foundational Course



Splunk Core Certified User

📄 Class & Skill Application

36 Class Hours • 36 Skill App Hours



Tableau Certified Data Analyst

📄 Class & Skill Application

36 Class Hours • 36 Skill App Hours

Intermediate Course



Splunk Power User

📄 Class & Skill Application

36 Class Hours • 36 Skill App Hours



Tableau Certified Consultant

📄 Class & Skill Application

36 Class Hours • 36 Skill App Hours